





Your designs deserve the perfect complement. From contemporary to classic, the MasterCraft Hardware Collection has the decorative cabinetry accents you need to finish your next project with a flourish.

Arranged by style for easy browsing, our Hardware Collection catalog offers up more than 200 beautiful options in a variety of finishes.

Cabinetry, finishes, appliances and more—a tasteful hardware selection can pull all your design elements together.

This year, let MasterCraft deliver the little details that can take your designs to another level.

Cover and Page 2
FRISCO Paint Grade Sea Salt and Maple Porter

CONTEMPORARY HARDWARE



Contemporary Pull A
HW-17796-MB
Matte Black



Contemporary Pull A
HW-17796-SN
Satin Nickel



Contemporary Knob C
HW-519-SN
Satin Nickel



Contemporary Pull D
HW-A5003-MB
Matte Black



Contemporary Pull D
HW-A5003-SN
Satin Nickel



Contemporary Pull E
HW-54996-DBAC
Brushed Oil Rubbed Bronze



Contemporary Pull E
HW-54996-MB
Matte Black



Contemporary Pull E
HW-54996-PC
Polished Chrome



Contemporary Pull E
HW-54996-SBZ
Satin Bronze



Contemporary Pull E
HW-54996-SN
Satin Nickel



Contemporary Pull E
HW-549128-DBAC
Brushed Oil Rubbed Bronze



Contemporary Pull E
HW-549128-MB
Matte Black



Contemporary Pull E
HW-549128-PC
Polished Chrome



Contemporary Pull E
HW-549128-SBZ
Satin Bronze



Contemporary Pull E
HW-549128-SN
Satin Nickel



Contemporary Knob F
HW-40-MB
Matte Black



Contemporary Knob F
HW-40-PC
Polished Chrome



Contemporary Knob F
HW-40-SBZ
Satin Bronze



Contemporary Knob F
HW-40-SN
Satin Nickel



Contemporary Pull F
HW-136-MB
Matte Black



Contemporary Pull F
HW-136-PC
Polished Chrome



Contemporary Pull F
HW-136-SBZ
Satin Bronze



Contemporary Pull F
HW-136-SN
Satin Nickel



Contemporary Pull F
HW-156-MB
Matte Black

CONTEMPORARY HARDWARE



Contemporary Pull F
HW-156-PC
Polished Chrome



Contemporary Pull F
HW-156-SBZ
Satin Bronze



Contemporary Pull F
HW-156-SN
Satin Nickel



Contemporary Pull F
HW-176-MB
Matte Black



Contemporary Pull F
HW-176-PC
Polished Chrome



Contemporary Pull F
HW-176-SBZ
Satin Bronze



Contemporary Pull F
HW-176-SN
Satin Nickel



Contemporary Pull F
HW-206-MB
Matte Black



Contemporary Pull F
HW-206-PC
Polished Chrome



Contemporary Pull F
HW-206-SBZ
Satin Bronze



Contemporary Pull F
HW-206-SN
Satin Nickel



Contemporary Pull F
HW-272-MB
Matte Black



Contemporary Pull F
HW-272-PC
Polished Chrome



Contemporary Pull F
HW-272-SBZ
Satin Bronze



Contemporary Pull F
HW-272-SN
Satin Nickel



Contemporary Pull F
HW-336-MB
Matte Black



Contemporary Pull F
HW-336-PC
Polished Chrome



Contemporary Pull F
HW-336-SBZ
Satin Bronze



Contemporary Pull F
HW-336-SN
Satin Nickel



Contemporary Pull G
HW-63596-DBAC
Brushed Oil Rubbed Bronze



Contemporary Pull G
HW-63596-MB
Matte Black



Contemporary Pull G
HW-63596-SBZ
Satin Bronze



Contemporary Pull G
HW-63596-SN
Satin Nickel



Contemporary Pull G
HW-635128-DBAC
Brushed Oil Rubbed Bronze

CONTEMPORARY HARDWARE



Contemporary Pull G
HW-635128-MB
Matte Black



Contemporary Pull G
HW-635128-SBZ
Satin Bronze



Contemporary Pull G
HW-635128-SN
Satin Nickel



Contemporary Knob H
HW-859T-DBAC
Brushed Oil Rubbed Bronze



Contemporary Knob H
HW-859T-MB
Matte Black



Contemporary Knob H
HW-859T-SBZ
Satin Bronze



Contemporary Knob H
HW-859T-SN
Satin Nickel



Contemporary Pull H
HW-8593-DBAC
Brushed Oil Rubbed Bronze



Contemporary Pull H
HW-8593-MB
Matte Black



Contemporary Pull H
HW-8593-SBZ
Satin Bronze



Contemporary Pull H
HW-8593-SN
Satin Nickel



Contemporary Pull H
HW-85996-DBAC
Brushed Oil Rubbed Bronze



Contemporary Pull H
HW-85996-MB
Matte Black



Contemporary Pull H
HW-85996-SBZ
Satin Bronze



Contemporary Pull H
HW-85996-SN
Satin Nickel



Contemporary Pull I
HW-83996-BNBDL
Brushed Pewter



Contemporary Pull I
HW-83996-DBAC
Brushed Oil Rubbed Bronze



Contemporary Pull I
HW-83996-NI
Polished Nickel



Contemporary Pull I
HW-83996-SN
Satin Nickel



Contemporary Pull I
HW-839128-BNBDL
Brushed Pewter



Contemporary Pull I
HW-839128-DBAC
Brushed Oil Rubbed Bronze



Contemporary Pull I
HW-839128-NI
Polished Nickel



Contemporary Pull I
HW-839128-SN
Satin Nickel

TRADITIONAL HARDWARE



Traditional Knob A
HW-117-BNBDL
Brushed Pewter



Traditional Knob A
HW-117-DBAC
Brushed Oil Rubbed Bronze



Traditional Knob A
HW-117-SBZ
Satin Bronze



Traditional Knob A
HW-117-SN
Satin Nickel



Traditional Pull A
HW-527-BNBDL
Brushed Pewter



Traditional Pull A
HW-527-DBAC
Brushed Oil Rubbed Bronze



Traditional Pull A
HW-527-SBZ
Satin Bronze



Traditional Pull A
HW-527-SN
Satin Nickel



Traditional Pull A
HW-527128-BNBDL
Brushed Pewter



Traditional Pull A
HW-527128-DBAC
Brushed Oil Rubbed Bronze



Traditional Pull A
HW-527128-SBZ
Satin Bronze



Traditional Pull A
HW-527128-SN
Satin Nickel



Traditional Knob B
HW-3980-BNBDL
Brushed Pewter



Traditional Knob B
HW-3980-DBAC
Brushed Oil Rubbed Bronze



Traditional Knob B
HW-3980-SN
Satin Nickel



Traditional Pull B
HW-Z29096-BNBDL
Brushed Pewter



Traditional Pull B
HW-Z29096-DBAC
Brushed Oil Rubbed Bronze



Traditional Pull B
HW-Z29096-SN
Satin Nickel



Traditional Pull B
HW-Z290128BNBDL
Brushed Pewter



Traditional Pull B
HW-Z290128-DBAC
Brushed Oil Rubbed Bronze



Traditional Pull B
HW-Z290128-SN
Satin Nickel



Traditional Knob C
HW-2980-BNBDL
Brushed Pewter



Traditional Knob C
HW-2980-DBAC
Brushed Oil Rubbed Bronze



Traditional Knob C
HW-2980-MB
Matte Black

TRADITIONAL HARDWARE



Traditional Knob C
HW-2980-PC
Polished Chrome



Traditional Knob C
HW-2980-SBZ
Satin Bronze



Traditional Knob C
HW-2980-SN
Satin Nickel



Traditional Pull C
HW-2981-BNBDL
Brushed Pewter



Traditional Pull C
HW-2981-DBAC
Brushed Oil Rubbed Bronze



Traditional Pull C
HW-2981-MB
Matte Black



Traditional Pull C
HW-2981-PC
Polished Chrome



Traditional Pull C
HW-2981-SBZ
Satin Bronze



Traditional Pull C
HW-2981-SN
Satin Nickel



Traditional Knob D
HW-Z117-BNBDL
Brushed Pewter



Traditional Knob D
HW-Z117-DBAC
Brushed Oil Rubbed Bronze



Traditional Knob D
HW-Z117-SN
Satin Nickel



Traditional Pull E
HW-8233-DBAC
Brushed Oil Rubbed Bronze



Traditional Pull E
HW-8233-SN
Satin Nickel



Traditional Knob F
HW-3910-BNBDL
Brushed Pewter



Traditional Knob F
HW-3910-DBAC
Brushed Oil Rubbed Bronze



Traditional Knob F
HW-3910-MB
Matte Black



Traditional Knob F
HW-3910-PC
Polished Chrome



Traditional Knob F
HW-3910-SBZ
Satin Bronze



Traditional Knob F
HW-3910-SN
Satin Nickel



Traditional Knob G
HW-897L-DBAC
Brushed Oil Rubbed Bronze



Traditional Knob G
HW-897L-SN
Satin Nickel



Traditional Pull G
HW-8973-DBAC
Brushed Oil Rubbed Bronze



Traditional Pull G
HW-8973-SN
Satin Nickel

TRADITIONAL HARDWARE



Traditional Knob H
HW-110-DBAC
Brushed Oil Rubbed Bronze



Traditional Knob H
HW-110-SN
Satin Nickel



Traditional Pull H
HW-1103-DBAC
Brushed Oil Rubbed Bronze



Traditional Pull H
HW-1103-SN
Satin Nickel

TRANSITIONAL HARDWARE



Transitional Knob A
HW-435L-BNBDL
Brushed Pewter



Transitional Knob A
HW-435L-SN
Satin Nickel



Transitional Pull A
HW-43596-BNBDL
Brushed Pewter



Transitional Pull A
HW-43596-SN
Satin Nickel



Transitional Pull A
HW-435128-BNBDL
Brushed Pewter



Transitional Pull A
HW-435128-SN
Satin Nickel



Transitional Knob B
HW-MO6303-DBAC
Brushed Oil Rubbed Bronze



Transitional Knob B
HW-MO6303-SBZ
Satin Bronze



Transitional Knob B
HW-MO6303-SN
Satin Nickel



Transitional Pull B
HW-MO6373-DBAC
Brushed Oil Rubbed Bronze



Transitional Pull B
HW-MO6373-SBZ
Satin Bronze



Transitional Pull B
HW-MO6373-SN
Satin Nickel

TRANSITIONAL HARDWARE



Transitional Pull C
HW-38296-BNBDL
Brushed Pewter



Transitional Pull C
HW-38296-DBAC
Brushed Oil Rubbed Bronze



Transitional Pull C
HW-38296-SN
Satin Nickel



Transitional Pull C
HW-382128-BNBDL
Brushed Pewter



Transitional Pull C
HW-382128-DBAC
Brushed Oil Rubbed Bronze



Transitional Pull C
HW-382128-SN
Satin Nickel



Transitional Knob D
HW-484-BNBDL
Brushed Pewter



Transitional Knob D
HW-484-DBAC
Brushed Oil Rubbed Bronze



Transitional Knob D
HW-484-MB
Matte Black



Transitional Knob D
HW-484-SBZ
Satin Bronze



Transitional Knob D
HW-484-SN
Satin Nickel



Transitional Knob E
HW-525-BNBDL
Brushed Pewter



Transitional Knob E
HW-525-DBAC
Brushed Oil Rubbed Bronze



Transitional Knob E
HW-525-MB
Matte Black



Transitional Knob E
HW-525-SBZ
Satin Bronze



Transitional Knob E
HW-525-SN
Satin Nickel



Transitional Pull E
HW-52596-BNBDL
Brushed Pewter



Transitional Pull E
HW-52596-DBAC
Brushed Oil Rubbed Bronze



Transitional Pull E
HW-52596-MB
Matte Black



Transitional Pull E
HW-52596-SBZ
Satin Bronze



Transitional Pull E
HW-52596-SN
Satin Nickel



Transitional Knob F
HW-449-BNBDL
Brushed Pewter



Transitional Knob F
HW-449-DBAC
Brushed Oil Rubbed Bronze



Transitional Knob F
HW-449-MB
Matte Black

TRANSITIONAL HARDWARE



Transitional Knob F
HW-449-PC
Polished Chrome



Transitional Knob F
HW-449-SBZ
Satin Bronze



Transitional Knob F
HW-449-SN
Satin Nickel



Transitional Pull F
HW-44996-BNBDL
Brushed Pewter



Transitional Pull F
HW-44996-DBAC
Brushed Oil Rubbed Bronze



Transitional Pull F
HW-44996-MB
Matte Black



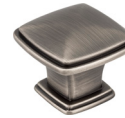
Transitional Pull F
HW-44996-PC
Polished Chrome



Transitional Pull F
HW-44996-SBZ
Satin Bronze



Transitional Pull F
HW-44996-SN
Satin Nickel



Transitional Knob G
HW-1091-BNBDL
Brushed Pewter



Transitional Knob G
HW-1091-DBAC
Brushed Oil Rubbed Bronze



Transitional Knob G
HW-1091-SN
Satin Nickel



Transitional Pull G
HW-1092-BNBDL
Brushed Pewter



Transitional Pull G
HW-1092-DBAC
Brushed Oil Rubbed Bronze



Transitional Pull G
HW-1092-SN
Satin Nickel



Transitional Pull G
HW-1092128BNBDL
Brushed Pewter



Transitional Pull G
HW-1092128-DBAC
Brushed Oil Rubbed Bronze



Transitional Pull G
HW-1092128-SN
Satin Nickel



Transitional Knob H
HW-944-DBAC
Brushed Oil Rubbed Bronze



Transitional Knob H
HW-944-MB
Matte Black



Transitional Knob H
HW-944-SBZ
Satin Bronze



Transitional Knob H
HW-944-SN
Satin Nickel



Transitional Pull H
HW-94496-DBAC
Brushed Oil Rubbed Bronze



Transitional Pull H
HW-94496-MB
Matte Black

TRANSITIONAL HARDWARE



Transitional Pull H
HW-94496-SBZ
Satin Bronze



Transitional Pull H
HW-94496-SN
Satin Nickel



Transitional Pull H
HW-944128-DBAC
Brushed Oil Rubbed Bronze



Transitional Pull H
HW-944128-MB
Matte Black



Transitional Pull H
HW-944128-SBZ
Satin Bronze



Transitional Pull H
HW-944128-SN
Satin Nickel



Transitional Pull I
HW-80814-DBAC
Brushed Oil Rubbed Bronze



Transitional Pull I
HW-80814-PC
Polished Chrome



Transitional Pull I
HW-80814-SN
Satin Nickel



Transitional Knob J
HW-658-NI
Polished Nickel



Transitional Knob J
HW-658-SBZ
Satin Bronze



Transitional Knob J
HW-658-SN
Satin Nickel



Transitional Pull J
HW-65896-NI
Polished Nickel



Transitional Pull J
HW-65896-SBZ
Satin Bronze



Transitional Pull J
HW-65896-SN
Satin Nickel



Transitional Pull J
HW-658128-NI
Polished Nickel



Transitional Pull J
HW-658128-SBZ
Satin Bronze



Transitional Pull J
HW-658128-SN
Satin Nickel



10501 10th Street, Waconia, MN 55387

MasterCraftCabinets.com

PRODUCT AVAILABILITY

Product photography and illustrations have been reproduced as accurately as print and web technologies permit. To ensure highest satisfaction, we suggest you view an actual sample for best color, wood grain and finish representation.

PRINTING LIMITATIONS

It is impossible to match the colors shown in this catalog with our cabinet finishes. Therefore, you must view the actual door samples when making your selection.



At the forefront of American craftsmanship and tradition, the MasterCraft family believes the best in quality, design, and production starts at home—providing jobs and supporting US communities.



© 2021 MasterCraft, Inc.



LANCASTER *Paint Grade Linen*